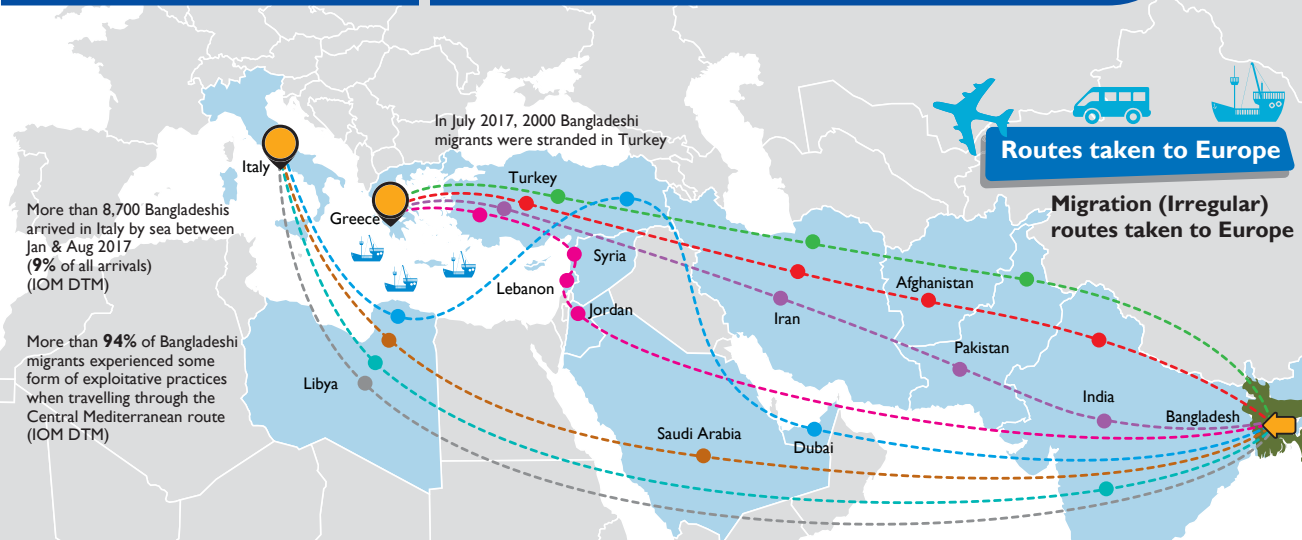


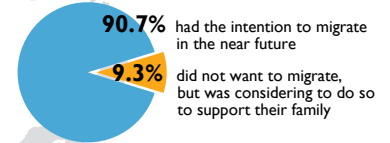


International Organization for Migration (IOM)
The UN Migration Agency

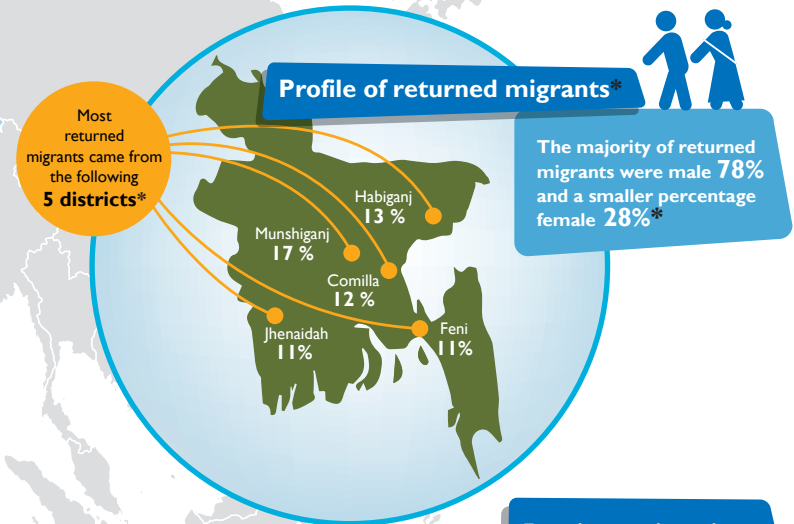
Safe Migration in Bangladesh: Routes and Profiles



Profile of potential migrants



Profile of returned migrants*



Demographic profile of potential and returned migrants*

Statements

65.3% of all respondents were between the ages of 18-29

Migrants are generally low educated. Majority of migrants with only 36.2% of all respondents completing primary education; 36.7% of potential migrants completing primary education and 34.1% of returned migrants completing primary education*

Most migrants are unemployed 35.7% or self-employed and engaged in seasonal or piecemeal work 43.7%

The average household of potential migrants is 5.57*

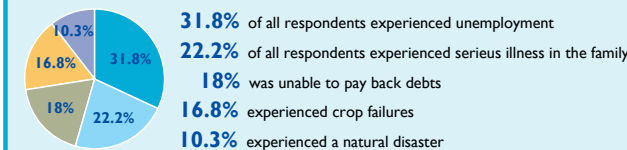
	All n=600 %	Potential n=474 %	Returned* n=126 %
Gender			
Female	67.5	67.1	69
Male	32.5	32.9	31
Age			
19-29	65.3	69.8	48.4
Education			
Completed Secondary	11	10.1	14.3
Employment			
Unemployed looking for work	35.7	36.1	34.1
Self-employed, seasonal or piecemeal work	43.7	42.8	46.8
Marital status			
Single	35.3	39.7	19
Married	60.3	56.8	73.8
Dependents			
Average household members	5.57	5.52	5.78

Economic profile of potential and returned migrants*

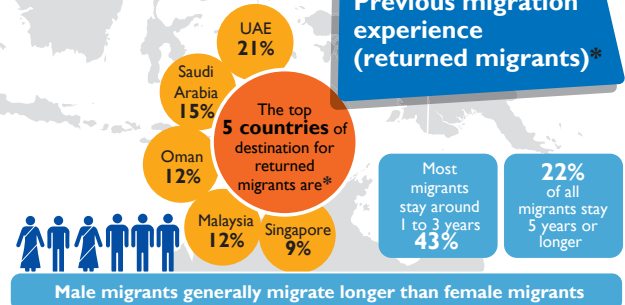
Socioeconomic class

	All n=600 %	Potential n=474 %	Returned* n=126 %
For 12.7% of all respondents, money is sometimes not enough to buy food	12.7	12.2	14.3
For 26.7% of all respondents, money is enough for food but not enough to buy new clothes	26.7	27.8	22.2
For 37% of all respondents, money is enough to buy food and clothes but not enough to buy a new television or refrigerator	37	36.3	39.7

Household conditions



Previous migration experience (returned migrants)*



*Returned cum potential migrants; those who had the intention to re-migrate

• Project funded by the European Union and implemented by IOM
• Findings are derived from KAP study administered under 600 potential migrants in 12 districts of Bangladesh (2017)