

702,000

New Rohingya arrivals since 25 August 2017 in Cox's Bazar*

915,00

Total Rohingya Population in Cox's Bazar*

1.3 Million

People in Need in Cox's Bazar



From 10-13 June, heavy rainfalls have resulted in floods and landslides affecting 17,386 people in Cox's Bazar district. ©IOM 2018/Lydia Moore

* Needs and Population Monitoring Round 10

Key Features

- ◆ This week, 343 individuals at highest risk of landslides were relocated to Camp 20 Extension. IOM protection team has been working in close collaboration with the Site Management team to support the most vulnerable individuals during relocations.
- ◆ In Camp 20 Extension, IOM is providing every day 10,000 litres of water to beneficiaries with a water emergency system.
- ◆ The Health team, together with Site Management engineers, visited eight out of 12 IOM health facilities to assess the access to health care services and how this can be improved—especially during severe weather events—through improving infrastructure of the facility and road access.
- ◆ Following the heavy rains, IOM Shelter team has conducted joint damage verification in six camps and identified 244 partially damaged and 313 totally damaged shelters. In the last two days, IOM and partner agencies have distributed emergency shelter items to the affected families.

Situation Overview - Impact of recent rains

17,386
 affected persons

3,901
 affected households

Over **31,000** individuals are located in the most at risk areas

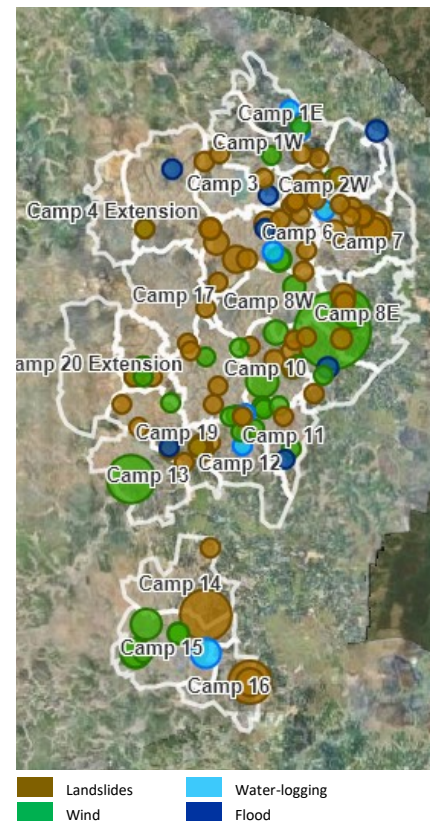
159 reported incidents (landslide, water logging, extreme wind, lightning and flood)

Source: Site Management Sector, Category 1 Incident Reports (10-13 June)

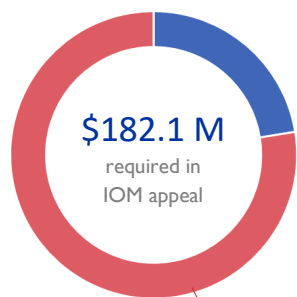
Heavy monsoon rains which started on 10 June 2018 have resulted in significant structural damage in the camps in Cox's Bazar. As Bangladesh's annual wet season has arrived, IOM is working against the clock to secure infrastructure and strengthen preparedness measures. Category 1 incidents since 10 June 2018, as reported through the multi-agency reporting mechanism and shared via the communal [incident overview platform](#) indicate that 14,246 persons were affected within the 4-day period.

IOM and partners are working to ensure that the Rohingya refugee population in the camps are able to continue receiving urgent support and life saving assistance during the ongoing rains, including critical WASH, Health, Protection, and Shelter provision.

IOM and partners are also working to ensure that site development, roads, and drainage are accessible and cleared to facilitate ongoing humanitarian response where needed most urgently.

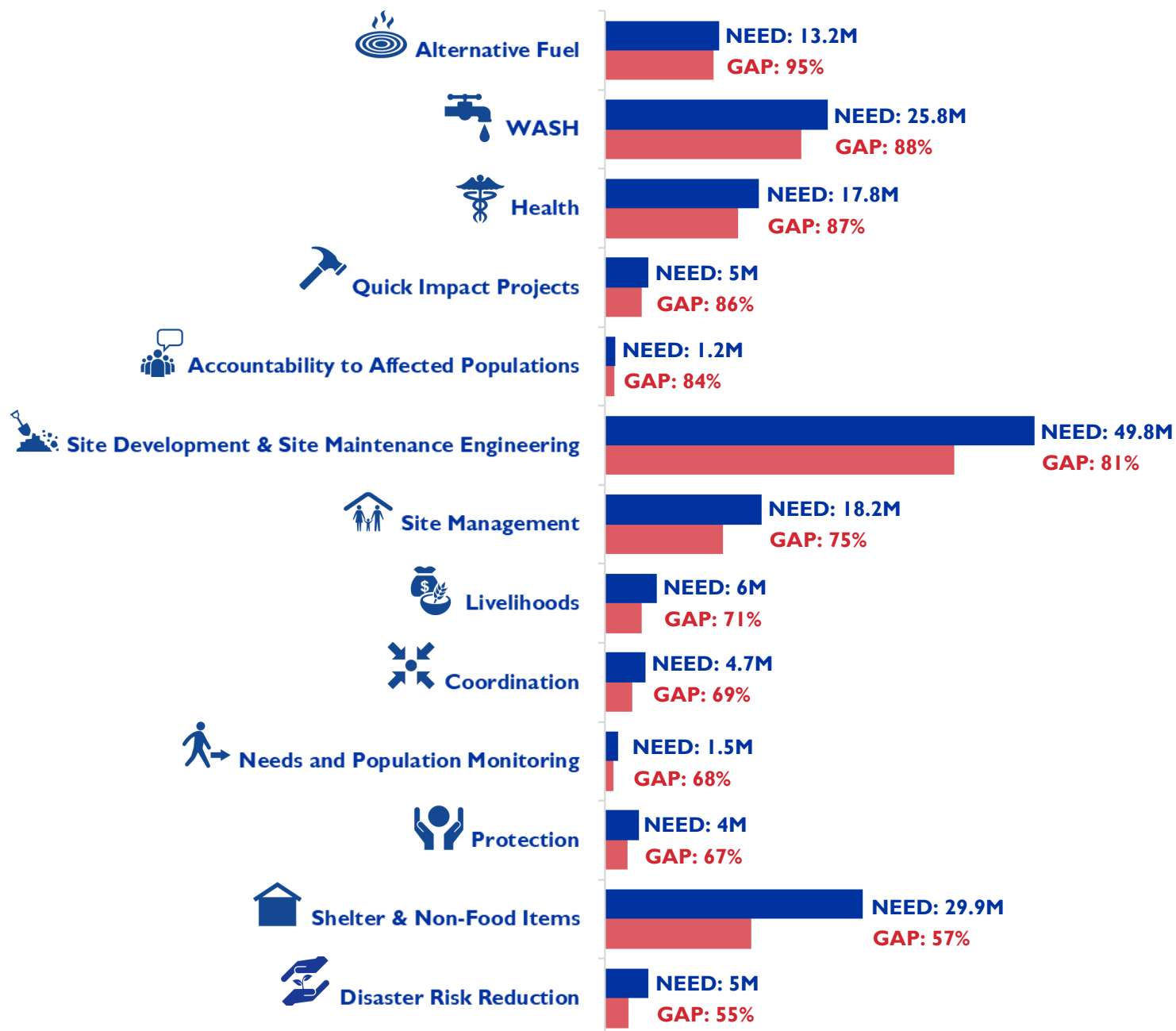


Funding Gaps affect Monsoon Preparedness and Response



78% unfunded

- ◆ IOM Site Development and Site Management teams are working round the clock to support refugee households caught up in the worst flooding and landslides. Road and drainage clearance are critical to continue operations as the roads are flooded. Without additional support, the capacity of the Site Development and Site Management teams to meet the most urgent need is limited.
- ◆ Health teams are working to ensure continued service in key sites. Flooding has demobilized several health centres that are urgently needed to provide critical health care to the refugee population. IOM is working to ensure continued access to health centres and mobile teams.
- ◆ WASH facilities in the most high risk areas have been compromised. WASH teams are working with Site Development to ensure that roads and drainage are cleared to facilitate water movement away from the camps and to ensure adequate access to functional latrines.
- ◆ Protection teams are working across the sectors to ensure that protection response and services are adequately mainstreamed.



 **Health**

IOM FACILITIES AFFECTED

12	Affected
4	Partly Damaged
4	Access difficulty
3	Drainage blocked
2	Flooded

Following heavy rains, the Health team and community members have experienced difficulties accessing some of the facilities due to flooding/ muddy drive or walk within the camp. IOM’s Health operations and response teams, together with site management engineers, visited eight out of 12 IOM health facilities in the camp to assess the access to health care services and how this can be improved—especially during severe weather events—through improving infrastructure of the facility and road access. Damaged facilities were also assessed and the repair works are nearly done.



Health team and Site Development engineers conducted a assessment of the 12 IOM health facilities. ©IOM 2018/Lydia Moore

Despite the access difficulties, IOM Health teams managed to provide 4,095 lifesaving health care consultations within four days. The consultations included six normal deliveries and a further referrals for four caesarean sections. The Health team plans to expand the services to other locations in the camp where the population will be relocated through Mobile Medical team (MMT).

IOM’s Health department urgently requires additional funding to ensure that life-saving healthcare support can continue, especially as weather conditions complicate service delivery to those most in need of assistance.

Last week, 11,839 consultations took place in IOM health centers and IOM supported Government facilities. In terms of Mental Health and Psychosocial Services (MHPSS), IOM provided specialised psychological support (individual consultations) and/or case management services to 75 people this week.

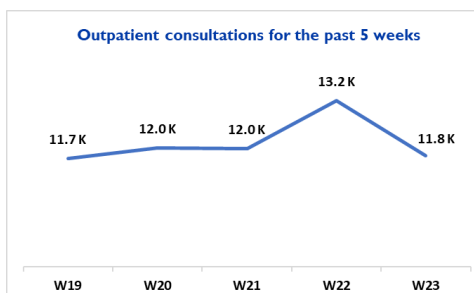
Moreover, 885 Antenatal Care (ANC) sessions were conducted within IOM and IOM supported government facilities, in addition to 54 deliveries and 121 Post-Natal Care (PNC) sessions.

Two Oral Rehydration Points Plus (ORP+) are operational at Kutupalong Primary Healthcare Centre (PHCC) and Leda PHCC. A total of 122 Acute Watery Diarrhoea (AWD) cases have been treated in the last week between these two ORPs and 18 stool sample were collected.

Communicable disease triage and isolations are operational at Kutupalong Primary Health Care Center (PHCC) and Leda PHCC. Last week, the centers have triaged 296 cases, and diagnosed and isolated three suspected tuberculosis, 60 mumps, eight chicken pox and two suspected Diphtheria cases.

417,511 consultations held since August 2017

6,371 patients have been triaged for suspected diphtheria since December 2017



Flooded zone in Camp 11 affecting a health post. ©IOM 2018/Lydia Moore



Needs and Population Monitoring (NPM)

What is NPM?

Composed of several tools and processes, NPM regularly captures and analyzes multilayered data and disseminates information products that help us better understand the evolving needs of the displaced population, whether on site or en route.

NPM has launched its [new online portal](#) this week. This portal replaces the previous page [globaldtm.info/Bangladesh](#), which will not be updated after today.

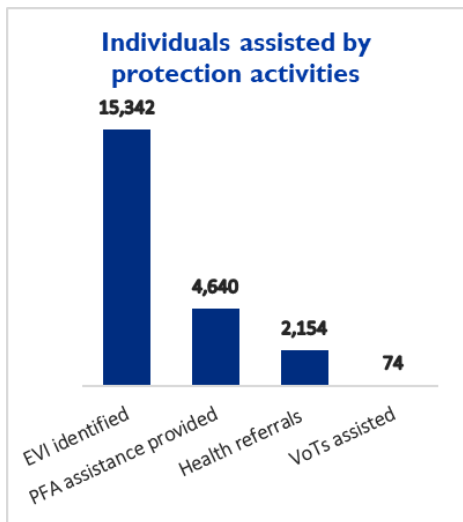
This week, NPM completed drone flights of the whole area of Kutupalong as well as Camp 4 and Camp 20 extensions. NPM has deployed a drone flight pilot, who will also be supporting NPM with flying drone during the rainy season in the district of Cox’s Bazar, covering camps and camp-like settings. In case of emergency, the images will be used to give information about locations where access is limited. This information can be used to get an overall understanding of where assistance is urgently needed.

NPM is receiving feedbacks on the Site Management Category 1 online dashboard and enhancements have been completed. The reporting system is working well, with over 159 incidents reported in 3 days (see cover page). Feedback from key informants and users has been very positive. NPM in collaboration with Site Management sector developed an incident assessment form in case of emergency. This tool, allows focal persons who are responsible for specific camps, to report directly to NPM in case of incidents. To get an overview of incidents reported, NPM has developed an [online web map](#), which visualises specific areas where incidents took place.

Finally, NPM rolled out its regular data collection exercise, *Baseline Round 11*, which will continue throughout this week. The baseline provides an overview of key population numbers of the Rohingya refugees in Cox’s Bazar district whilst also identifying the locations to be assessed during the full NPM Site Assessment, which will be conducted after the baseline is completed. Information is collected through interviews with *majhees* (community leaders).



Protection



This week, IOM Protection team has been working in close collaboration with Site Management to support the most vulnerable individuals during relocations to Camp 20 extension, which included on site support, monitoring and follow-up. During relocations, the Protection team ensured that assistance was provided to most in need, ensured safety of households during movement, and provided dedicated case management when required.

After the heavy rains, IOM staff assessed protection facilities and ensured Safe Spaces were operational, providing safe areas for women and girls and continuing Psychosocial Support (PSS) and referrals.

IOM has taken the lead on coordinating GBV actors in Teknaf in contribution to the inter-agency response mechanism led by GBV sub-sector.

Additionally, GBV community mobilisers successfully completed a training on early warning messaging and risk mapping/planning, that they will be conducting with the community, including with women and girls in the safe spaces as well as with identified extremely vulnerable households across several IOM camps. They will also be working with community groups to ensure messaging and community planning reach Extremely Vulnerable Individuals (EVIs), including women and girls, at household level.

Moreover, a women’s empowerment curriculum was adapted and translated to be used in the women and girls friendly spaces. A two Training of Trainers (TOT) on the curriculum was provided to 20 PSS officers and two Safe Space Managers. The curriculum will aim at empowering women through self-confidence and self-esteem, decision making and negotiation, as well as with conflict resolution and advocacy skills.

Finally, considering the vulnerability of the Rohingya population to trafficking and exploitation, The Counter Trafficking (CT) team is raising awareness and educating the leaders and members of the community on CT related risks and prevention. Therefore, during the reporting week, eight individuals - including majhees, Para Development Committees (PDC) members, parents, and host community members were informally sensitised and informed on the work of IOM CT unit.



Site Management & Site Development

IOM is coordinating the Site Management and Site Development Sector

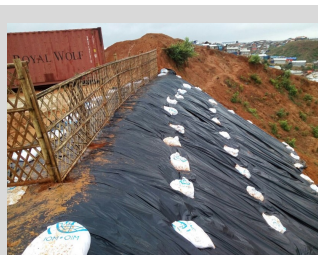
Since 7 June, 74 households (HH)/343 individuals were relocated to Camp 20 Extension.

In addition, 61HH/275 individuals were relocated to Camp 20 and 79HH/320 were relocated internally in Camp 19.



Water diversion channel at UB3 inlet side to protect culvert head wall from seepage and soil erosion.

IOM is working to repair infrastructures damaged by the storm. This includes unblocking drainage culverts, positioning sandbags to stop further erosion, clearing landslides from access roads, digging temporary drainage channels to release rain water, and diverting traffic.

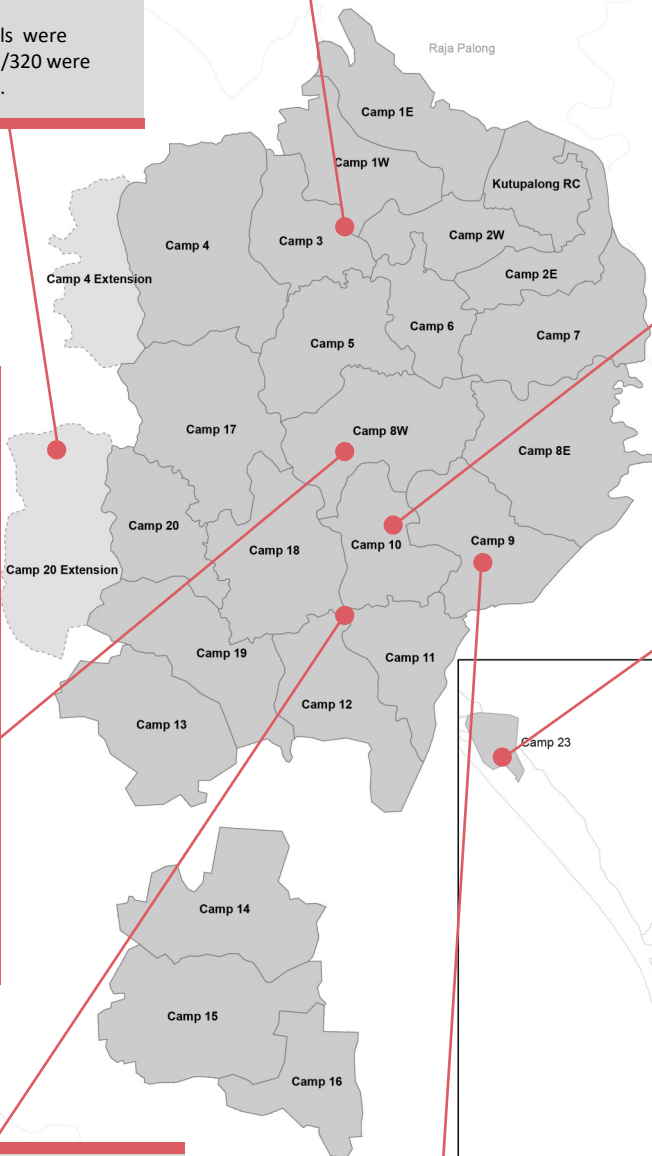


Protecting earth embankment in Camp 10.

Protecting soil erosion in Camp 8W.



Cash-for-work teams constructing emergency access.



In Hatkhula Para Mitigation camp, the level of water went high before low tide. The areas, that had been backfilled as a preparedness measure, did not get flooded despite heavy rains and the high tide.



Following the strong rains, run-off water has damaged the army road. IOM teams have worked to protect damaged portions of the road to prevent further erosion.



Heavy rains have damaged a number of infrastructures, including bridges. IOM teams have assessed the damages and are working on repairing prioritised access infrastructures in the camp.

People having trouble accessing their shelter in Leda because of floods.



Water, Sanitation and Hygiene (WASH)

306 Deep Tube Wells (DTWs) completed since August 2017

3,551 emergency latrines & mobile toilets constructed since August 2017

626 wash rooms constructed since August 2017

93,358 hygiene kits distributed since August 2017

After the rains, WASH agencies, including IOM, assessed damaged infrastructures. According to the Site Management Category 1 incident reports, a total 94 latrines, and five water points have been damaged in IOM-managed camps. The Wash team is coordinating with Site Management focal points the monitoring of specific WASH issues such as damaged water points, latrines, and bathing units.



Repairs of damaged latrines in Camp 20 extension. ©IOM 2018

IOM also identified drainages getting blocked due to high amount of silt flowing with the storm water. IOM Site Development team along with WASH agencies are working to clean the drainage. Those issues were specifically reported from Camp 9, 10, 11 which are in the downstream of canals.

In Camp 20 Extension, IOM is providing every day 10,000 liters of water to beneficiaries with a water emergency system. Another bladder tank will be installed soon.

IOM's water supply project in collaboration with the Japan International Cooperation Agency (JICA) and Bangladesh Department of Public Health Engineering (DPHE) completed the borehole drilling at a depth of 402m. The project aims at offering a safer and more reliable water access to 30,000 people in Camp 12. Currently, the procurement of the water reservoir is ongoing and the infrastructure design is progressing.

IOM has established a WASH common pipeline that includes 360,000 top up hygiene kits and 73,000,000 Aquatabs. IOM continues to reach out to additional partners to join the WASH common pipeline while encouraging existing partners to request, collect and distribute top up hygiene kits to beneficiaries. So far, eleven agencies have signed the pipeline agreement and a total of 93,358 kits (32,471 hygiene kit and 60,887 top-up hygiene kits) have been distributed by eight agencies, reaching 466,675 beneficiaries.

The construction of DTWs in host villages Chapotkhali, Dhakkin Pannasia, and Tolatoli is completed and the installation of 64 DTWs is ongoing in Balukhali-Kutupalong Expansion Site (KBE) and in host village Monkhal. The completed DTWs are serving around 153,000 beneficiaries.

A total of 626 wash rooms have been constructed to date in KBE and the Hindupara host community. The construction of an additional 98 wash rooms is ongoing KBE and in Shamlapur.



Emergency water supply system was installed in Camp 20 extension.

©IOM 2018



Shelter/Non Food Items (NFIs)

IOM is coordinating the Shelter/NFI Sector

42,118 households have received Upgrade Shelter Kits (USKs) since February 2018

40,950 households reached through shelter upgrade and Disaster Risk Reduction (DRR) orientation since February 2018

3,588 extremely vulnerable households supported with material transportation and shelter construction since February 2018, engaging **9,975** cash-for-work labourers

Following the heavy rains, IOM Shelter team has conducted joint damage verification in six camps and identified 244 partially damaged and 313 totally damaged shelters. On 13 and 14 June, IOM and partner agencies have distributed emergency shelter items to the affected families.

In Camp 20 extension, Shelter and Site Management teams are working to establish robust shelters for families relocated from landslide risk areas. By ramping up labour force and introducing effective pre-cut/pre-assemble construction modalities, IOM is producing 50 new shelters every day, for all families who move to safe site.

As part of preparedness activities, IOM distributed 2,303 Upgrade Shelter Kits (USKs) in Camps 9, 18, 20 of Kutupalong-Balukhali Expansion (KBE) Site, Leda and Unchprang as well as 3,612 Tie-Down Kits (TDKs) in Camps 9, 10 and Unchprang. Tie-down kits include ropes, pegs and sandbags to reinforce shelters. In addition, IOM provided shelter upgrade and Disaster Risk Reduction (DRR) orientation sessions to 100 households in Camp 10.



With the alert of monsoon rains and winds, distributed TDKs are used to reinforce shelters, Camp 20. ©IOM 2018

Last week, a total of 50 Rohingya refugees were engaged in cash-for-work activities to transport USKs

and construct shelter for 16 extremely vulnerable Rohingya households.

IOM started the reinforcement of two mosques in Camp 9 and 10 to be used as temporary communal shelters in case flood or landslide affect family shelters. Upgrade works for eight mosques will be completed next week, creating space for 430 individuals.



Resilience and Disaster Risk Reduction (DRR)

37,550 beneficiaries have received micro-gardening kits and food storage since March 2018 (25,000 Rohingya refugees and 12,550 host community members)

This week, a structural assessment of 20 shelters in 17 location was conducted with the support of an engineer from Site Management sector. Bill of Quantity (BoQ) for these constructions and rehabilitations is currently under preparation.

IOM, in collaboration with the Food and Agriculture Organization (FAO), is also supporting the resumption and improvement of farming activities and recovery of agriculture-based livelihoods through the provision of essential agricultural production kits for farmers' groups (power tillers, high-efficiency irrigation pumps and sprayers for organic pesticides and rice thresher including distribution of seeds). This week, 200 rice threshers were distributed.

To date, two training were conducted with over 80 participants on *Capacity Building for Environmental Protection during Humanitarian Assistance* with the International Center for Climate Change and Development (ICCCAD).

Moreover, IOM organised trainings on Disaster Management and First Aid for 540 Cyclone Preparedness Programme (CPP) volunteers in Teknaf, in collaboration with CPP of the Ministry of Disaster Management and Relief (MoDMR). The training oriented volunteers on disaster management concepts, emergency evacuation, First Aid as well as search & rescue techniques.

Finally, two 2-day trainings on Disaster Management Framework and Social Safety Nets was organised for nine Union Disaster Management Committees (UDMC). The trainings provided an overview of the legal framework of disaster management in Bangladesh as well as an orientation on the national social safety net strategy including the integration inclusion issue into the programme such as inclusion of children, youth, vulnerable women, the elderly and persons with disabilities.



A total of 200 rice thresher were distributed this week. ©IOM 2018



Inter-Sector Coordination Group (ISCG)

IOM is hosting the sector based coordination structure for the Rohingya

The overall humanitarian response for the Rohingya refugee crisis is facilitated by a sector-based coordination mechanism, the Inter-Sectoral Coordination Group (ISCG), established for refugee response in Cox’s Bazar. The ISCG is guided by Strategic Executive Group (SEG) that is designed to be an inclusive decision-making forum consisting of heads of international humanitarian organizations to ensure effective humanitarian response to the Rohingya refugee crisis.

ISCG facilitates timely, coordinated, needs-based, and evidence-driven humanitarian assistance for efficient use of resources and to avoid duplication, while producing regular Situation [Reports](#) and [4W maps and data](#). Over the past week, the ISCG met to discuss the harmonization of cash-for-work rates for both Rohingya refugees and Bangladeshi host communities amongst all partners. To date, rates for casual and unskilled labour have been agreed upon, and discussions will continue on sector-wide rates for semi-skilled and skilled labourers this week.

IOM in the news



Two Days of Heavy Rain Hit Bangladesh’s Rohingya Refugee Camps – Over 31,000 at High Risk from Flooding, Landslides

IOM (11 June 2018)

Cox’s Bazar - Heavy monsoon rains that began on Saturday (09/06) have caused severe structural damage to Bangladesh’s Cox’s Bazar Rohingya refugee camps. Over 31,000 of the camps’ one million refugees, who fled Myanmar, are still living in areas considered to be at high risk of deadly flooding and landslides.

Click [here](#) to read the full story.



Conditions Deteriorate in Bangladesh’s Rohingya Refugee Camps as Torrential Rain Continues

IOM (12 June 2018)

Cox’s Bazar – Conditions in the Rohingya refugee camps of southern Bangladesh are further deteriorating as torrential rains that began on Saturday (09/06) continue to trigger landslides and flooding. Humanitarian agencies reported some 29 incidents in the camps yesterday (11/06), bringing the total number to 88 in just three days.

Click [here](#) to read the full story.

Donors to IOMs Response Plan



Contact: Programme Support Unit, Cox’s Bazar | CXBpsu@iom.int